

Bushy Point Restoration Project

Annual Report 2019/20
(1 April 2019 – 31 March 2020)



2019/2020 - Summary of Progress

This report details the progress made on the Bushy Point Restoration

Project. The Project is the flagship project of the Otatara Landcare Group (OLG) – www.otataralandcare.org.nz. The report also contains some wider OLG information where relevant.

- **Planned and managed with DOC and Environment Southland the Triple Celebration planting day event – 120 people attended on Saturday 14 September 2019. The event celebrated 20 years of the OLG, 30,000 plants in the ground and 15,000 volunteer hours. A new interpretation sign and booklet were produced for the occasion.**
- **Planted 1000 locally grown native plants and covered with combi-guards for rabbit control.**
- **Maintained the previous 19 years plantings**
- **Managed major pest control operation (6km of trap network over 90 hectares) with volunteers**
- **Maintained entrance area and public walkway**
- **Continued weed control (particularly gorse)**
- **Continued grazing horses and baleage management.**
- **Managed a calendar of monthly working afternoons for weeding, putting combi-guards on, track work, planting.**
- **Eco-fun day event at Community Nursery and Bushy Point 10 November 2019 – 32 people attended.**
- **Managed with Environment Southland the Southland Girls High School break out days with year 7 students – 1-2 April 2019.**

1. Aim of the Bushy Point Restoration Project

The aim of the Bushy Point Restoration Project is to restore a 14 hectare area of rough exotic pasture between two remnants of nationally significant native totara forest to provide a habitat linkage for native birds and to enhance existing forest remnants and other ecosystems. Also, to raise public awareness of the importance of native forest remnants and to provide a practical long term ecological project for residents of Otatara and Otatara and Invercargill schoolchildren to be involved in.

The project is progressively turning the area of exotic grasses into a functioning, self-sustaining native ecosystem with features and educational opportunities that can be enjoyed by the public of Otatara and Invercargill for the future.

The project is managed by the Committee of the Otatara Landcare Group, an Incorporated Society established in 1999.

The Mission Statement of the Otatara Landcare Group is:

- **To focus attention of Otatara residents and others on the natural features and ecological values of the Otatara environment, especially native forest and wetland flora and fauna.**
- **To promote and, where possible, facilitate the protection, restoration and creation of such features in the interests of scientific appreciation and intrinsic worth and to encourage community appreciation of these values.**

2. Administration

- Annual Report completed for 2018/19 including compilation of trapping statistics
- Correspondence with Environment Southland on annual plan allocation
- Annual accounts separate Bushy Point income and expenditure. Audited accounts to 31 March 2020 presented to the OLG AGM on 13 May 2019.
- Updated OLG website to add Pestbusters to OLG Website content.

3. Caretaker

- Caretaker Barry Smith spent 152.5 hours working at Bushy Point during the year
- Main jobs included: plant area maintenance, releasing and weed control, tree planting, supervising baleage and fertiliser application, track maintenance, preparation for Living Legends planting – positioning plants, track preparation, post hole digging, toilet arrangement and activity on the day etc
- Liaison with landowners, grazers, Invercargill Rifle Range, DOC, Local Authorities, schools and report writing.
- Caretaker Barry has been a key figure in ensuring the new initiatives have been successful and key ongoing management tasks and liaison is undertaken.
- Main user of the Mulcher Mower machine for track work, weed control and maintenance of Living Legends year 2 planting area.

Total	99	74	26	17	17	10	6	12	13	10
-------	----	----	----	----	----	----	---	----	----	----

Possum Count of Catch	Year				Grand Total
	2017	2018	2019	2020	
Total	9	7	4	4	308

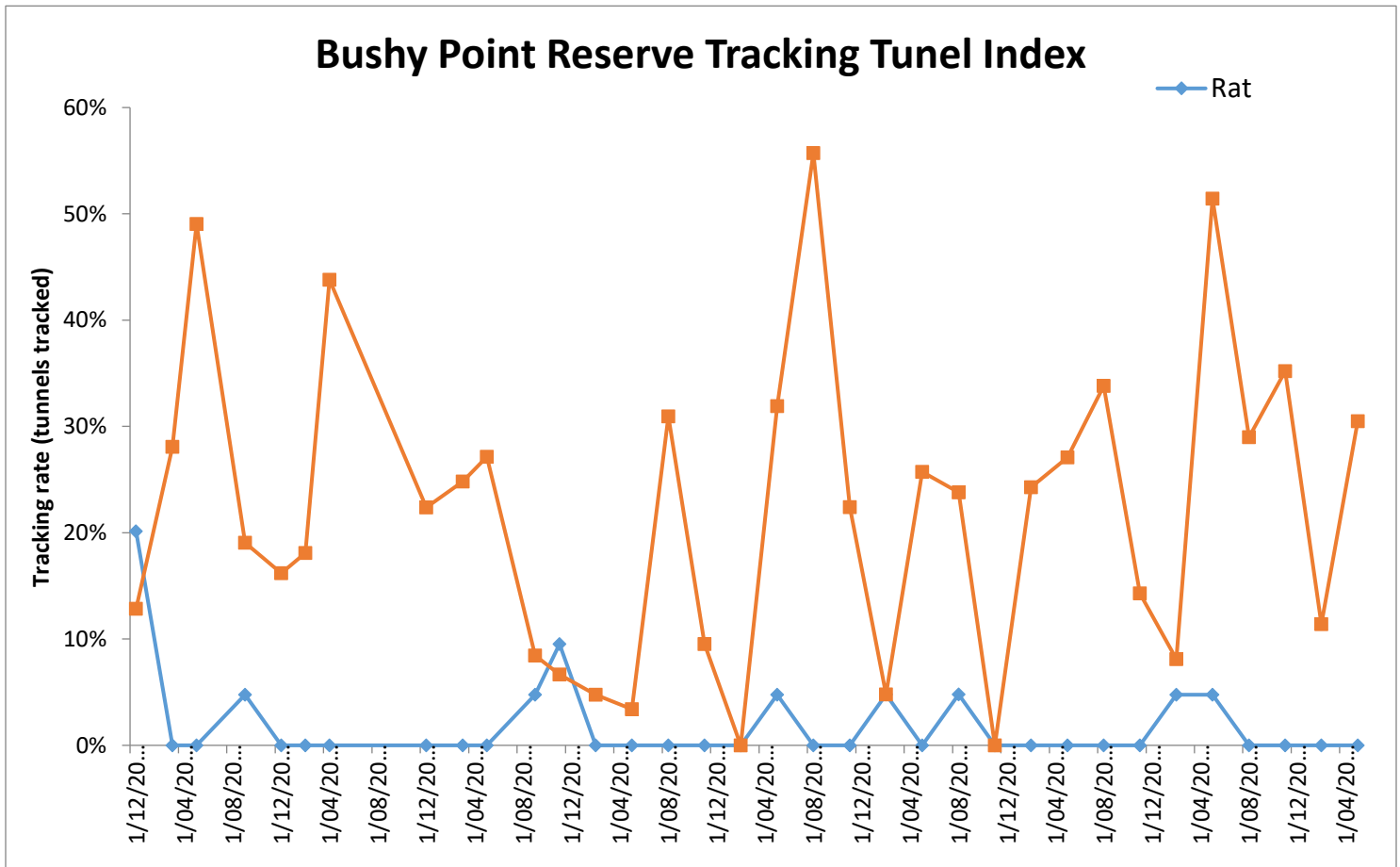
Mustelids caught by calendar year were as follows (note 2020 up to March 2020):

Count of Catch	Year										
	2007	2008	2009	2010	2011	2012	2013	2014	2015	2016	
Ferret					1						5
Stoat Adult (F)	1	1	5	2	2	1	4	1	3		
Stoat Adult (M)	2	3	2		3	1	6				
Stoat Juvenile (F)								2			
Stoat Unknown	10	9	11	8	1	9	6	5	11	7	
Weasel	1	3		1	1	1	2		1		
Grand Total	14	16	18	11	8	12	18	8	15	12	

Count of Catch	Year				Grand Total
	2017	2018	2019	2020	
Ferret	4	1	1		12
Stoat Adult (F)		3	1		24
Stoat Adult (M)	2	1	1		21
Stoat Juvenile (F)					2
Stoat Unknown	11	4	2	2	96
Weasel	3	1		2	16
Grand Total	20	10	5	4	171

- Statistics and maps can now use 14 years of data to establish trends in trap catch at Bushy Point. Information on trapping is collected in the form of spreadsheets and this information is available for further analysis.
- Trapping results are also recorded on the Trap NZ website.
- Lizard artificial covers, weta motels and seedfall traps are still in place but monitoring by Environment Southland has ceased.
- Bird count stations have been set up and are monitored by Kiri Pullen for Environment Southland every November. These counts are done in association with Mores Reserve, Bluff Hill, and Omaui Reserve.

- Rat, mouse and stoat monitoring by Environment Southland continued with the results below.



Email 25/05/2020 : Subject May Rodent Results

Hi Rances,

Attached are the latest rodent tracking results. Another ratless monitor – been a full year of zeros!

Great work,

Tom.

Tom Harding

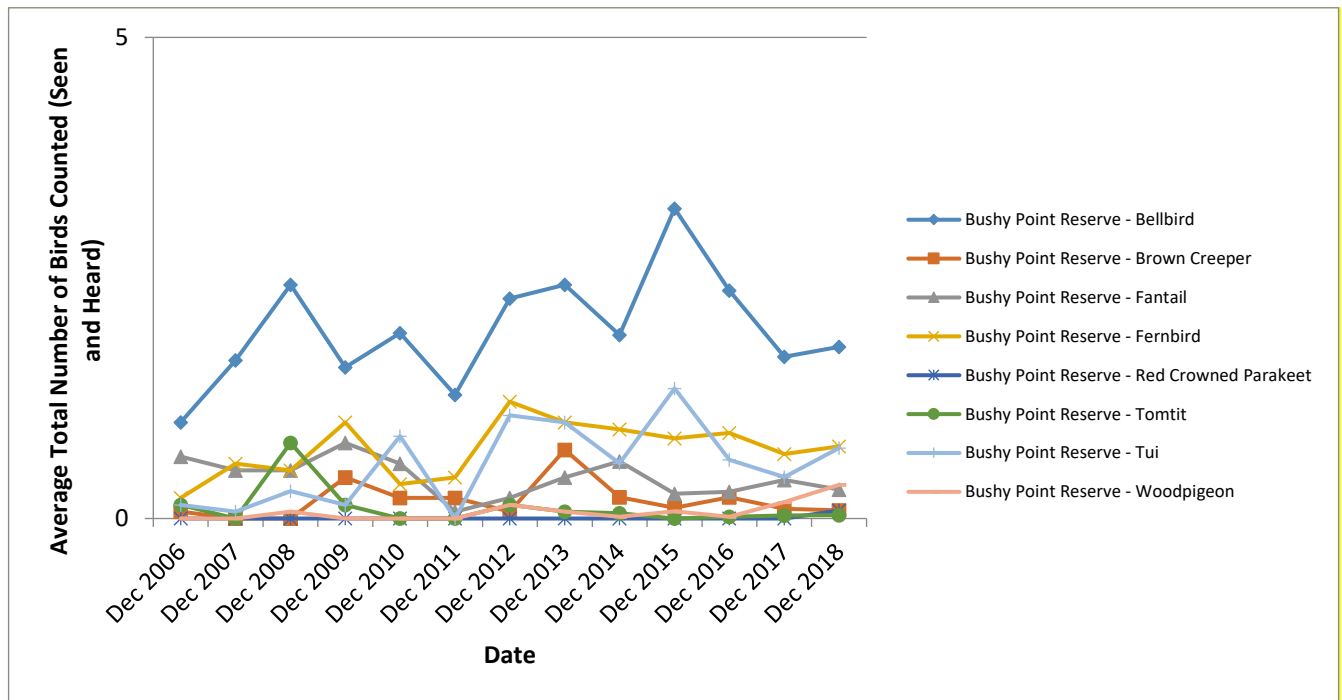
Biosecurity Officer - Monitoring and Information
Environment Southland *Te Taiao Tonga*

P 03 211 5115 | DDI 03 211 5427 | M 021 784 965

Cnr Price St & North Rd, Private Bag 90116, Invercargill 9840

Tom.Harding@es.govt.nz | www.es.govt.nz | facebook.com/environmentsouthland

BUSHY POINT BIRD MONITORING 2006-2018



December 2019 bird Count Data

While we received the raw data from the bird counts undertaken in 2019, it was not in a form that we could use. Environment Southland have analysed the data in the past and we await the data in a form we can use.

Thanks to Mark Oster, Tom Harding and Ali Meade Environment Southland for ongoing support and advice with pest control in 2019/20.

Wider Otatara Pest Control – Otatara Pestbusters

Otatara Pestbusters (encouraging pest control on private land by their owners), was continued throughout 2019/20. This project (a sub-group of the Otatara Landcare Group) has been handed over by the founders Russell and May Evans to Dallas Bradley. It now has nearly 300 members, most doing pest control. The project builds on the 90 hectares of control at Bushy Point and has been supported by Environment Southland funding which has enabled the group to supply traps and bait at a subsidised price. Each person actively engaged in pest control receives a letterbox sign and regular newsletters.

Since 2013/14 Invercargill City Council Reserves at Otatara have been brought into Pestbusters and traps are being serviced by volunteers in those locations.

In 2012 negotiations began to include Otatara South Scenic Reserve into intensive pest control. Department of Conservation funding for 2014 has ensured that this reserve has been intensively trapped for possums, stoats and rats in 2015/16. Thanks go to local

resident Peter Simpson for spearheading the pest control in Otatara South Scenic Reserve and now Chris and Jane Bowen – supported by Pestbusters.

6. Weed Control

- Gorse, broom and blackberry control continued, particularly at the Bryson Road
- Hand weeding of plants by volunteers each month – organised by Sally Duston.
- Spot spraying of areas in preparation for Living Legends 2019 planting – by Barry Smith.
- The mulcher mower utilised for gorse control in the plantation area
- The OLG continues to run an annual Chilean Flame Creeper night at Bowman Bush on 28 January 2020.

7. Infrastructure

- Bushy Point Track mowed as required, track improvements made.
- Track around pond maintained.
- Posts and track markers for self-guided activity trail
- Posts for new track alignment and interpretation
- The mulcher mower utilised for trackwork
- Muddy part of the track beyond the pond improved by sand

8. Interpretation and public access

- The Bushy Point walkway continues to be used by individuals and groups.
- Five Interpretation Signs maintained on-site
- A new “Growing Forests and Communities” Interpretation sign designed and erected at time of Planting Day – September 2019.
- Living Legends planting with 120 people attending main public planting day 14 September 2019.
- Doggy do bags provided at the entrance to the Bushy Point Track.
- Geocaches including a multi geocache were placed in Bushy Point in 2015

General Information and Advocacy

- Otatara Pigeon Post Newsletter published and delivered to all Otatara residents June and December 2019, OLG website updated regularly with events.
- OLG Website updated to include a “Pestbusters” section

9. Volunteers and Public Involvement

- Number of hours for the year – 1030 hours (over 15860 hours in total for the project).
- School visits – Southland Girls High School Break out days 1-2 April 2019 which included a memorial planting for the Christchurch Mosque massacre.
- 8 Pest lines (over a 90 hectare area) maintained every 2 weeks by a group of dedicated volunteers.

- A range of “small jobs” (tool sharpening, track work, weed control) put out on email for people to do in their own time, with good results.
- Family Eco-Fun Day held 10 November 2019.
- A series of bat walks undertaken early 2020 – no bats detected
- Orienteering event held 7 April 2020
- Monthly workdays organised at Bushy Point throughout 2018/19. Average of 6 people per monthly working afternoon

10. Grazing/pasture management

- Horse grazing has continued in 2019/20.
- No sheep grazing, but balage taken off.

11. Funding

Successful funding application was submitted to:

- ES Long Term Plan - funding \$10000 including Bushy Point Pestbusters Otatara South, Bush Haven and Southland Community Nursery.
- An application for funding for three years for Bushy Point, Otatara South and Pestbusters was made to Department of Conservation in 17/03/2020

12. Expenditure and Income

- General expenditure for Bushy Point 2019/20 was \$9187
- Public Liability Insurance was \$553.74
- Pest Control Expenses were \$4160 (incl Otatara South Reserve)
- Total grazing and balage income for Bushy Point 2019/20 was \$1039.92

13. Key Tasks for 2020/21

- Preparation for Living Legends Event 12 September 2020
- Release spraying 2019 Living Legends plantings
- Preparation spraying for 2020 Living Legends plantings
- Weed control, as required, for previous 19 years of plantings
- Continued track maintenance – look at solution to muddy sections
- Continue to work with schools at Bushy Point, in particular Southland Girls High School, Otatara School, James Hargest and other schools for Living Legends School planting.
- Weed control particularly gorse paddock, broom on boundaries and releasing of planted plants
- Maintain with volunteers all pest lines every 2 weeks from spring.
- Continue work to extend pest control over wider Otatara area particularly new estuary edge area
- Investigate using self-setting rat traps in place of poison at Bushy Point
- Continue to support the Otatara Pestbusters initiative

- Continue with the monthly calendar of events.
- Consult Environment Southland on the health of the New River Estuary
- Instigate bird recording by local residents to complement Bird Counts

14. Acknowledgements

Thanks to the Department of Conservation, Environment Southland, Invercargill City Council, surrounding landowners and volunteers for their efforts in making 2018/19 another very busy and successful year for the Bushy Point Restoration Project.

Barry Smith, Chair OLG – 14 December 2020

SGHS Breakout 1-2 April 2019



New Interpretation Sign unveiled at Triple Celebration

Bushy Point Project
GROWING FORESTS AND COMMUNITIES

Otatara Landcare Group

BUSHY POINT BEFORE & AFTER

It was the year **2000** when Otatara Landcare Group **volunteers** started planting at Bushy Point.

In **2019** we shall celebrate the milestone of **30,000** native plants!

Our website explains how you can help: otataralandcare.org.nz

ARE YOU ON HERE?
Let us know!

You can help! Find out how at www.otataralandcare.org.nz

Photos by Dawn Patterson, Chris Duggan, Jason Stirling

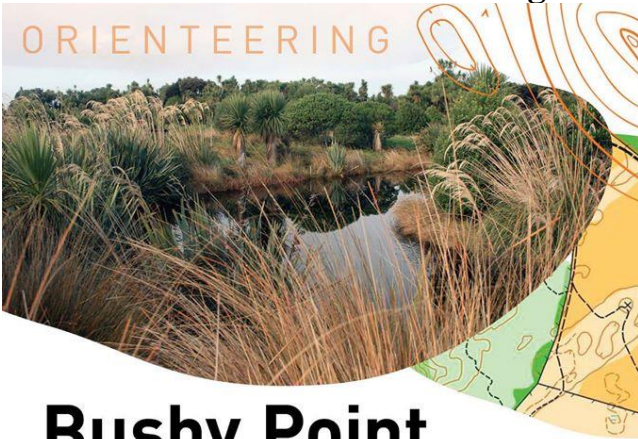
Otatara Landcare 2019

The graphic features a large collage of small photographs showing various people engaged in planting and community activities. A large green bird is on the left, and a white bird is on the bottom left. The text is arranged in a structured layout with a dark green header and a red footer.

Triple Celebration 12 September 2019



Orienteering Event – 7 April 2020



Bushy Point

Sunday, 7 April 2019

- ▶ Bushy Point, Bryson Rd, Otatara
- ▶ Start anytime between 11.30am - 1pm
- ▶ Score event + White/Yellow course
- ▶ No dogs please (bait)

Discover Bushy Point in Otatara with our orienteering 'score event' - where the controls may be visited in any order. Controls are given a points value and the aim is to gain as many points in 60 minutes. (Lose points for every minute if you are late back!)

There will also be a standard White/Yellow orienteering course available.

Helpers needed for Registration – contact Ann 2178745

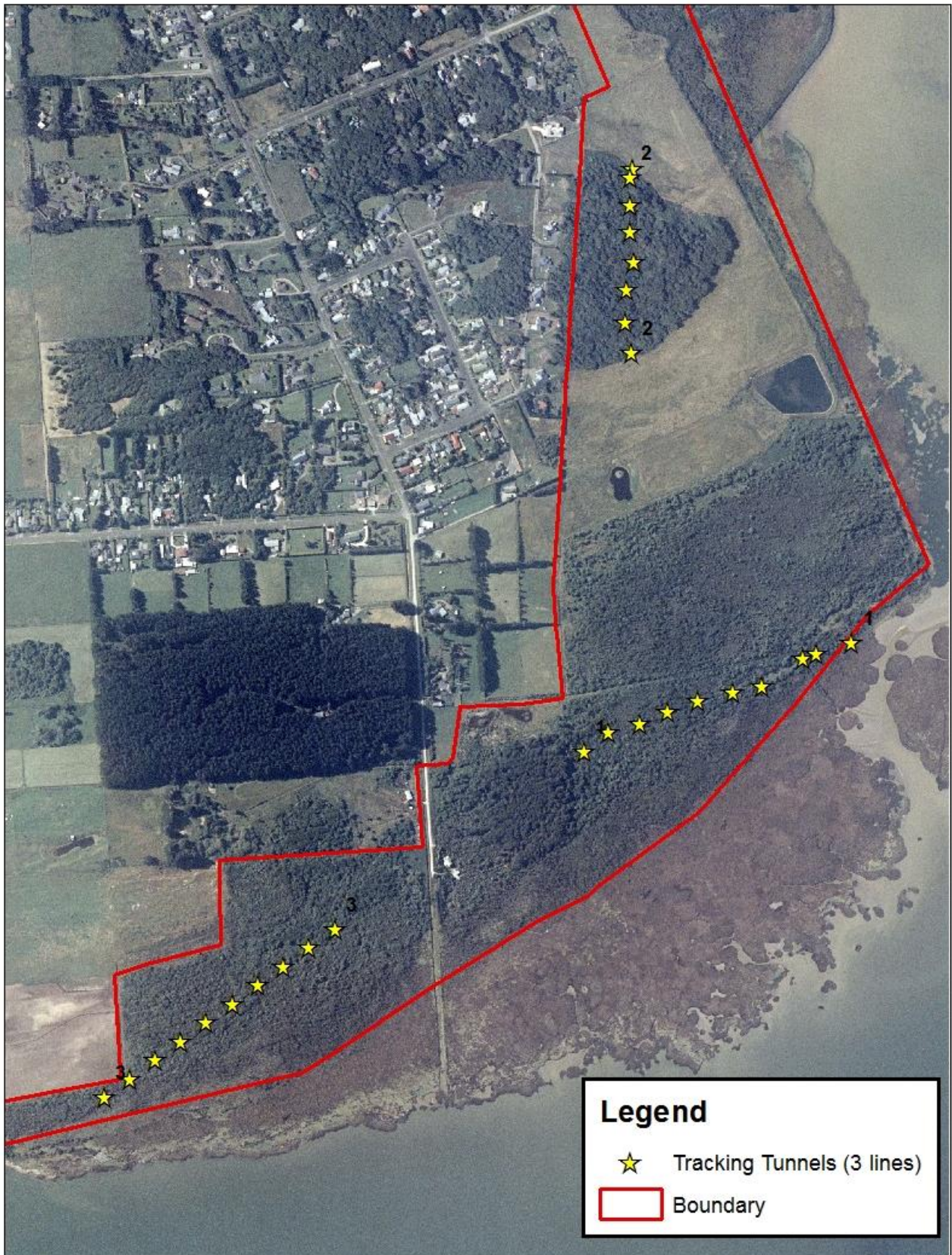


Have a go!

Southland Orienteering Club
www.southlandorienteeringclub.co.nz



Rodent Monitoring lines at Bushy Point



**Bushy Point/Otatara Rodent
Tracking Tunnel Monitoring**
Date: 05 November 2012



Cadastral information derived from Land Information New Zealand. CROWN COPYRIGHT RESERVED. Aerial Photography dated 5/2/2007 to 14/03/2008. Copyright Terra Link International Limited.

DISCLAIMER: Environment Southland cannot guarantee that the information shown is 100% accurate and should not be relied upon in any manner without proper consultation.

Map of Bird Count Locations at Bushy Point 2017/2020



Legend

Active

- Yes
- ▭ Reserve Boundary



Bushy Point Otatara
5 min bird count stations
Date: 29 October 2014



Cadastral information derived from Land Information New Zealand, CROWN COPYRIGHT RESERVED. Aerial Photography dated 5/2/2007 to 14/03/2008, Copyright Terralink International Limited

DISCLAIMER: Environment Southland cannot guarantee that the information shown is 100% accurate and should not be reused in any manner without proper consultation.

Bushy Point Pest Control 2007-2020



Possum Hot Spot Map 2007-2019



Eco-Fun Day – 10 November 2019



Urban Research – Bushy Point Restoration Sites – Waikato University

People, Cities & Nature

Restoring indigenous nature in urban environments

<https://www.peoplecitiesnature.co.nz/>

What is People, Cities & Nature?

People, Cities & Nature is a inter-disciplinary research programme with six projects across New Zealand that are working towards restoring indigenous biodiversity in urban environments. The programme is funded by the Ministry of Business, Innovation & Employment. People, Cities & Nature is led by Professor Bruce Clarkson and managed by Catherine Kirby. The six projects are as follows and Bushy Point is under the Restoration Plantings project.

- [Restoration plantings](#)
- [Urban lizards](#)
- [Mammalian predators](#)
- [Māori restoration values](#)
- [Green space benefits](#)
- [Cross-sector alliances](#)

Plantings

Planting of native species to restore forest in urban centres is an important conservation activity that has been gaining momentum in New Zealand for over 40 years. Early projects were few in number, largely isolated from each other, and weren't based on scientific knowledge. In contrast, today's urban forest restoration projects are numerous, increasingly linked by conservation networks and knowledgeable communities, and are often on the cutting-edge of our ecological understanding.

Our **Plantings** research is addressing the demand for new information on best practice in urban ecological restoration to support these projects. We are studying plantings throughout nine New Zealand cities to better understand the requirements for efficiency and success of restoration efforts of city councils and community groups.

We want to discover the most efficient pathway to restore an urban forest, from first plant in the ground, to a mature ecosystem that self-regenerates. There are two main ways we are doing this. First, we are using a nation-wide chronosequence approach, whereby space is substituted for time, for surveying to determine how regeneration dynamics of restoration plantings vary with microclimate and vegetation composition among cities. Second, we are planting and monitoring enrichment species such as rimu and tawa to test how to facilitate urban forest succession. Findings from this work will help to improve wildlife habitat and ecosystem service provision through successful restoration of long-lived, self-regenerating urban forests.

Vegetation & Environment Surveys

Our surveys use permanent vegetation plots to quantify the structure, composition, and environmental conditions of urban vegetation. We have developed methods that will provide detailed understanding of the short-term (1-10 yrs) to medium-term (10-40 yrs) successional dynamics of restoration plantings. Our data help us answer questions like: when exactly does canopy closure occur so that competing weeds die back? and, which environmental conditions are most important for trees to regenerate successfully? Hard data on these important ecological processes is currently unavailable for New Zealand cities.

Understanding how light, microclimate, and understorey conditions change over the first 40 years of development will provide councils with critical information for long-term planning to maximise efficiency of resource allocation. City councils will be provided with improved restoration planting guidelines to maximise both immediate and long-term success of projects.

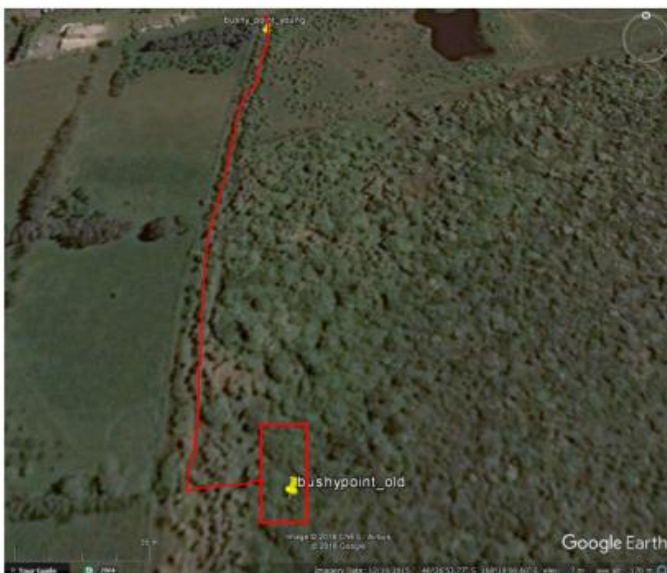
Study sites

The study sites for the Plantings research project are in nine cities:

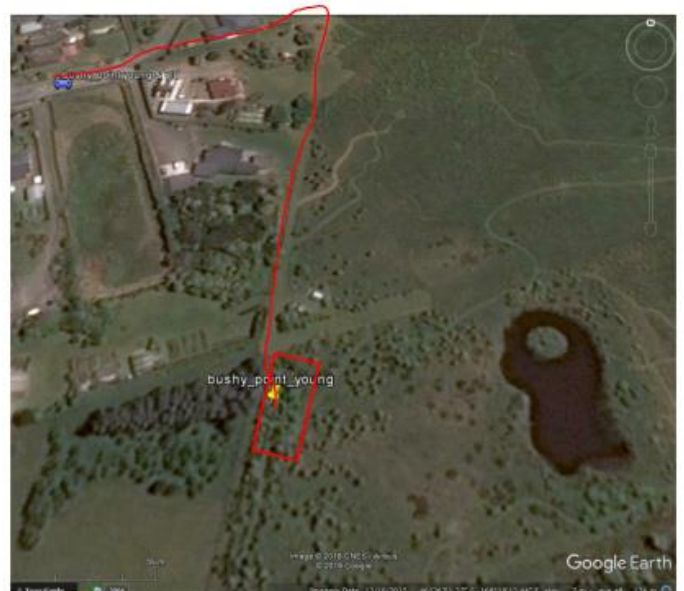
- Tauranga
- Hamilton
- Napier
- New Plymouth
- Wellington
- Nelson
- Christchurch
- Dunedin
- Invercargill

Bushy Point Sites

5) bushy_point_old, 2000



4) bushy_point_young, 2006



Bushy Point Habitat Restoration Project

Twenty First Annual Report – April 1st 2019 ~ 31st March 2020

The number of hours we put into the Bushy Point project was down on recent years and the lowest for 8 years. The reason for this is mainly because the Southland Girls high School Year 7 community break-out did not occur during this financial year. With the 2018 visit occurring in February 2018 and the 2019 visit occurring in April of 2019. However we still got our 1000 plants in the ground and an ever so slightly wetter summer than the previous two years has seen reasonable growth of these plants.

Outside of our planting day, the major event of our calendar year, was our second largest event day, that of the visit by the Southland wide Guides movement, some 60 girls, parents and leaders with the guides working to complete their conservation badges over a two hour period of weeding. They contributed 120 hours to our plant maintenance area by doing a couple of hours weeding each. As with all young people they mostly took to the task at hand with a great deal of enthusiasm and as time rolled on some of them started to lose momentum whilst others continued on right through. However they were all a credit to their organisation and as such will be the leaders of the future.

There have been no major challenges and the normal and reasonably popular events such as the monthly work days continue to gather a small work party with positive results for the area.

Health and Safety: An inspection of our park bench and picnic tables resulted in there being no loose bolts or nails, no sharp edges and no broken pieces of wood.

This year's notable achievements - Statistics: This year's hours are compared with the previous years in brackets.

- This year we have contributed a total of 1030.7 (832.7) hours. Total time to date for 20 years is 15,860.4 (14,829.7) hours
- Pest hours this year: 216.5 (278.5) hours: Continued good work by our team of people who check the trap lines every 2 weeks for 10 months of the year. It takes a lot of dedication, focus and enthusiasm to do this job and the difference they have made to the Bushy Point eco-system has been an outstanding effort
- Tree planting 552.2 (230.0) Hrs. Interesting to note the huge reduction in hours spent planting and still getting some 1000 plants in the ground. This may be partially due to the fact of not having SGHS Yr 7 here during this period. Younger less experienced people do take a little longer to complete the tasks properly
- Plant area Maintenance 88.4 (179.9). Is up on the previous two years and was mainly due to the Southland Area Guides.
- Spraying weeds 150.2 (90) Ltrs.
- Pathways maintenance 29.6 (33.7). Represents about the normal amount of hours for the task.
- Mower hours 40.7 (26.3).

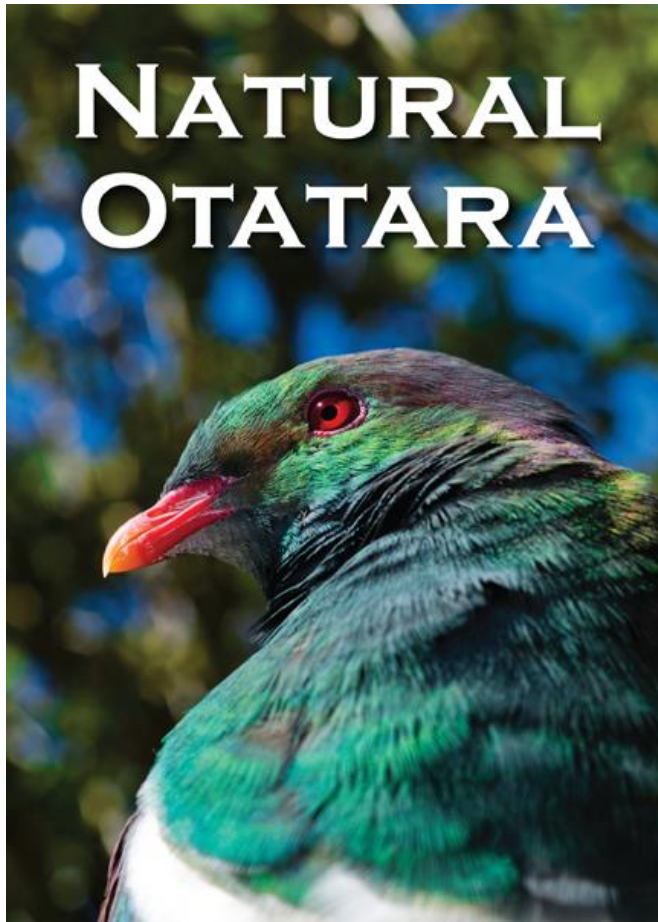
Barry Smith

Barry Smith

- o Table this report
- o Table a copy of the time sheets for the year



**General Advocacy - Natural Otatara Booklet, Kereru Road Signs,
Otatara Pestbusters, Otatara Pigeon Post Newsletter**



**PIGEON
POST**

*Newsletter of the
Otatara Landcare Group*

Issue 58, Autumn 2020

Welcome to Pigeon Post, the newsletter of the Otatara Landcare Group. In this newsletter we bring you news of the latest happenings in our area and snippets of information, anecdotes and ideas about improving our environment as well as some fun activities to keep you occupied during this uncertain time.

Your contacts:

Chairman, Barry Smith: 03 213 1500
Secretary, Chris Rano: 03 213 1161
Treasurer, Glenda Graham: 03 213 1397
PP editor, Lesley Catterall: 021 916 124

Committee Members:

Brian Rance, Randall Milne, Jane Bowen, Sally Duston,
Graeme Childs, May Evans, Linda Jackson, Ray Jackson,
Gwiff Dombro, Cathy MacFie, Dallas Bradley, Lloyd Esler,
Dave Toole, Bronwyn Graham

Additional Contributors:

Kathy Morrison, Maurice Rodway, Penelope Gillette

Please contact the Otatara Landcare Group if you have any questions, suggestions or problems relating to the Otatara and Sandy Point areas:
otataralg@gmail.com

In This Issue

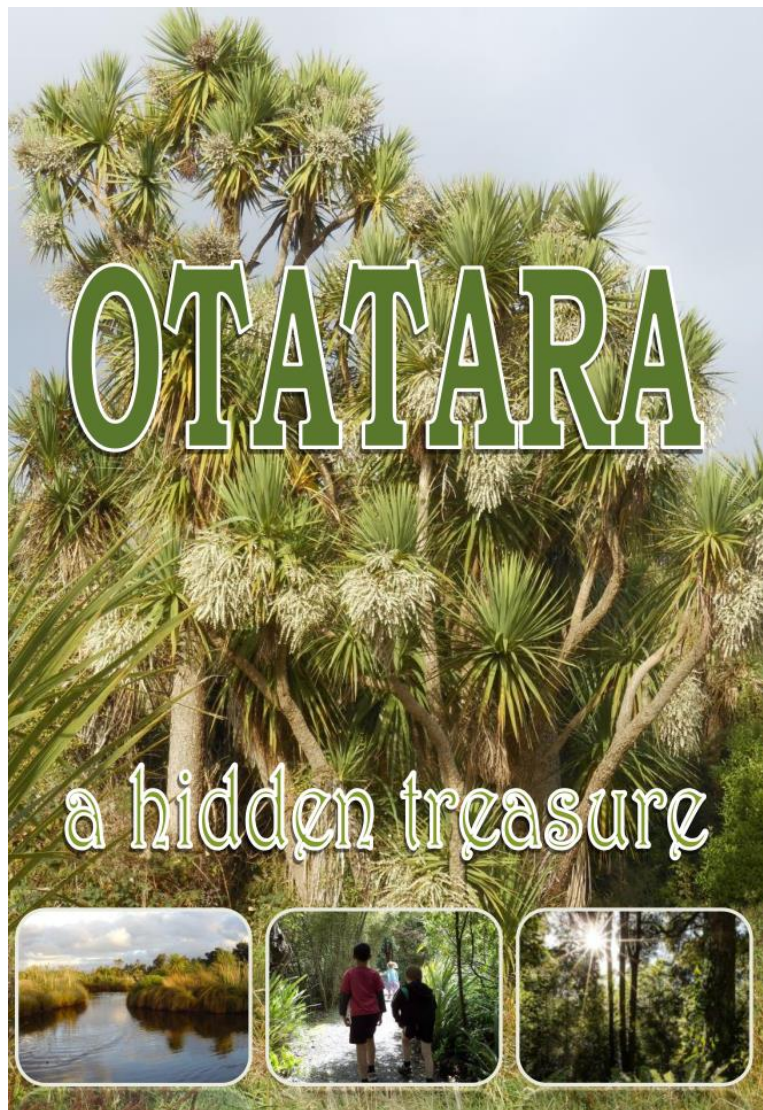
- [Editorial / Chairspeak](#)
- [A Stroll at Bushy Point](#)
- [Big Dreams](#)
- [Nature Journaling with Jo Ojter & Sandra Morris](#)
- [Reflections](#)
- [Litter Intelligence Programme](#)
- [Rare Forest Protected](#)
- [Southland Community Nursery](#)
- [The Letter Game](#)
- [Pestbusting In Lockdown](#)
- [Bushy Point Super Sleuth Bush Walk](#)
- [Wetland Forest Planting Project](#)
- [Garden Bird Survey](#)
- [Garden Design Project](#)
- [Out and About In Otatara](#)
- [OLG Word Find](#)
- [Mountain Bike Tour](#)
- [OLG Membership Form](#)



<p>APRIL Monday 1,2</p> <p>Friday 5</p> <p>Sunday 7</p> <p>Sunday 7</p> <p>Sunday 14</p> <p>Friday 12, 26</p>	<p>Southland Girls High School Breakout days at Bushy Point, volunteer help always appreciated (ph Chris 2131161 evenings). This replaces our March Bushy Point working day so feel free to come and help. All help appreciated – start 9.30am-2pm –entry through Barrys at 173 Grant Road, Otatara.</p> <p>Free Native Plant Restoration Workshop – Book with Mark Oster - Mark.Oster@es.govt.nz</p> <p>Community Nursery Plant sale 10am-noon Southland Community Nursery, 185 Grant Road</p> <p>Orienteering Event Bushy Point – Sally Duston 2131403 0273548209</p> <p>Bushy Point work day – 1pm-3pm (ph Sally 2131403, 0273548209)</p> <p>Southland Community Nursery, 185 Grant Road - volunteer mornings – 9am-noon (ph Chris 2131161). www.southlandcommunitynursery.org.nz (park at 183 Grant Road car park) – note closed Good Friday</p>
<p>MAY Friday 3</p> <p>Friday 3, 10, 17, 24, 31</p> <p>Saturday/Sunday 11, 12</p> <p>Sunday 12</p> <p>Wednesday 15</p>	<p>Apple Pressing Workshop – Southland Community Nursery – 1pm-4pm (park at 183 Grant Road car park) www.southlandcommunitynursery.org.nz</p> <p>Southland Community Nursery, 185 Grant Road - volunteer mornings – 9am-noon. (ph Chris 2131161) (park at 183 Grant Road car park) www.southlandcommunitynursery.org.nz</p> <p>Nature Journalling Workshop with Jo Ogier – Southland Community Nursery – bookings essential ranes@southlandcommunitynursery.org.nz</p> <p>Bushy Point Planting Day 1pm-3pm (ph Sally 2131403 0273548209)</p> <p>Otatara Landcare Group AGM – Otatara Church Hall, Oreti Road 7-9pm</p>
<p>JUNE Friday 7, 14, 21, 28, 29</p> <p>Sunday 9</p> <p>Saturday 15</p>	<p>Southland Community Nursery, 185 Grant Road - volunteer mornings – 9am-noon. Friday 7 and 14 will be CUTTINGS WORKSHOPS please book a place (ph Chris 2131161). (park at 183 Grant Road car park)</p> <p>Bushy Point Work Day 1pm-3pm ph Sally (2131403, 0273548209)</p> <p>Matariki Night Celebration and BYO Supper to share at Community Nursery Education Centre KCC 5-6.30pm then 7pm-9pm - park 183 Grant Road (ph Chris 2131161). www.southlandcommunitynursery.org.nz</p>
<p>JULY Friday 6,13</p> <p>Sunday 7</p>	<p>Southland Community Nursery, 185 Grant Road - volunteer mornings – 9am-noon (ph Chris 2131161). Nursery closed for winter.</p> <p>Bushy Point Work Day 1pm-3pm ph Sally 2131403, 0273548209</p>
<p>AUGUST Sunday 4</p>	<p>Bushy Point Work Day 1pm-3pm ph Sally 2131403, 0273548209 Preparation for big Planting next Month. KCC combined trip</p>
<p>SEPTEMBER Saturday 7</p>	<p>Ecofest Invercargill</p>

<p>Sunday 8</p> <p>Saturday 14</p> <p>Friday 20, 27</p>	<p>Bushy Point Work Day - 1pm-3pm ph Sally 2131403, 0273548209 Preparation for big Planting next week. KCC combined trip</p> <p>Conservation Week Activity - Big tree planting day for families at Bushy Point (ph Barry 2131500). Combined with Kiwi Conservation Club Bronwyn KCC 2130017 southland@kcc.org.nz</p> <p>Southland Community Nursery, 185 Grant Road - volunteer mornings – 9am-noon (ph Chris 2131161). www.southlandcommunitynursery.org.nz</p>
<p>OCTOBER</p> <p>Friday 4,8,11,25</p> <p>Sunday 6</p>	<p>Southland Community Nursery, 185 Grant Road - volunteer mornings – 9am-noon (ph Chris 2131161). www.southlandcommunitynursery.org.nz (park at 183 Grant Road car park)</p> <p>Bushy Point Work day 1pm-3pm (ph Sally 2131403, 0273548209)</p>
<p>NOVEMBER</p> <p>Friday 1, 8, 15, 22, 29</p> <p>Sunday 3</p> <p>Sunday 10</p>	<p>Southland Community Nursery, 185 Grant Road - volunteer mornings – 9am-noon (ph Chris 2131161). www.southlandcommunitynursery.org.nz (park at 183 Grant Road car park).</p> <p>Bushy Point Work day 1pm-3pm (ph Sally 213140, 0273548209)</p> <p>Eco-Fun Day at Bushy Point and Southland Community Nursery 1pm-3pm (ph Sally 2131403) (park at 183 Grant Road car park) and pick up your eco-pack from the Education Centre. Leaders Chris Rance 2131161, Bronwyn KCC 2130017 southland@kcc.org.nz</p>
<p>DECEMBER</p> <p>Friday 6, 13, 20</p> <p>Wednesday 18</p>	<p>Southland Community Nursery, 185 Grant Road - volunteer mornings – 9am-noon (ph Chris 2131161). www.southlandcommunitynursery.org.nz (park at 183 Grant Road car park)</p> <p>Bushy Point Walk (Leader Barry Smith 2130500) – 7.30pm</p> <p>Kiwi Conservation Club (KCC) is a children’s nature activity club for families. You can join at www.kcc.org.nz and will receive the “Wild Things” magazine 4 times a year. Southland Coordinator Bronwyn KCC 2130017 southland@kcc.org.nz</p>
<p>JANUARY 2020</p> <p>Monday 27</p>	<p>Chilean Flame Creeper Bowman Bush – meet Spence Avenue entrance 7pmRandall Milne</p>
<p>FEBRUARY</p> <p>Friday 7, 14, 21, 28</p> <p>Sunday 2</p>	<p>Southland Community Nursery, 185 Grant Road - volunteer mornings – 9am-noon (ph Chris 2131161). www.southlandcommunitynursery.org.nz (park at 183 Grant Road car park).</p> <p>Bushy Point work day – 1pm-3pm (ph Sally 2131403, 0273548209)</p>
<p>MARCH</p> <p>Friday 6, 13, 20, 27</p> <p>Sunday 1</p>	<p>Southland Community Nursery, 185 Grant Road - volunteer mornings including seed collecting – 9am-noon (ph Chris 2131161). www.southlandcommunitynursery.org.nz (park at 183 Grant Road car park)</p> <p>Bushy Point work day – 1pm-3pm (ph Sally 2131403, 0273548209)</p>

<p>Sunday 14</p>	<p>Rob Tipa (Treasures of Tane author) –Two workshops on Traditional Uses of Native Plants - 10am-noon and 1pm-3pm. Koha entry. Booking essential rances@southlandcommunitynursery.org.nz</p>
<p>Sunday 21</p>	<p>Southland Community Nursery Open Morning and Plant Sale - 10am-noon rances@southlandcommunitynursery.org.nz or 03 2131161</p>
<p>Following Events cancelled due to Covid 19 Pandemic.</p>	
<p>Tuesday 24</p>	<p>Otatara South Scenic Reserve Walk – the plants, the birds, trapping, history – meet 6.30pm Huru Huru Road entrance to the reserve. Leader Cathie McFie.</p>
<p>Monday 30</p>	<p>Articles to the Pigeon Post due –Lesley Catterall - lesleymcatterall@gmail.com</p>
<p>Tuesday 31</p>	<p>Southland Girls High School Breakout days at Bushy Point, volunteer help always appreciated (ph Chris 2131161 evenings). This replaces our March Bushy Point working day so feel free to come and help. All help appreciated –start 9.30am-2pm –entry through Barrys at 173 Grant Road, Otatara.</p>



<https://www.otataralandcare.org.nz/publications/>